



ANNUAL PROGRESS REPORT 2020

CAMP UNITY EASTSIDE



MESSAGE FROM CAMP UNITY EASTSIDE BOARD

Dear friends of Camp Unity,

A year ago, I could not have anticipated how 2020 would unfold. The global pandemic has meant challenges for all of us and heartache for many. Through all of this, I am profoundly grateful for many things. Your unwavering, compassionate, and generous support this past year is why Camp Unity Eastside has been able to persevere. Thanks to your support with meals, personal protection and other supplies, financial gifts, places to stay, care packages, notes, and much more, Camp Unity residents have stayed healthy, sheltered, and many were able to move to housing this past year.

I hope you enjoy looking through our third annual report to the community and reading about the impact your support has meant, the extent of the partnerships that underlie Camp Unity, progress on priorities this past year, and a look forward in 2021 and 2022.



Michael Grimm, President
Camp Unity Board
michael_grimm1960@yahoo.com

Karl Brackmann, Vice President
Ann Taylor, Board Treasurer
Alphonso Carter, Board member
John Eagle, Board member
Dennis Kronewitter, Board member
Michael Rader, Board member

PO Box 342
Redmond, WA 98073
www.campunityeastside.com
campunityeastside@gmail.com
(425) 652-9170
501(c)3 Nonprofit, Tax ID#46-1423855

A very special thank you to Audrey Tsai for sharing her talents to help prepare this report and undertake many other projects. Audrey is a senior in the gifted program at Interlake High School and a 2020-21 intern with CUE.

MISSION

Since 2012, Camp Unity Eastside (CUE) has provided a safe and stable shelter for men and women experiencing homelessness. Camp Unity is a self-managed transitional mobile encampment that receives guidance from a volunteer board. Each resident at Camp Unity is a responsible and active part of keeping the camp running. Camp Unity's mission is to provide safe shelter for homeless adults in a community setting while they are working to obtain stable housing. The Camp Unity community promotes resilience, relationships, self-confidence, and hope.

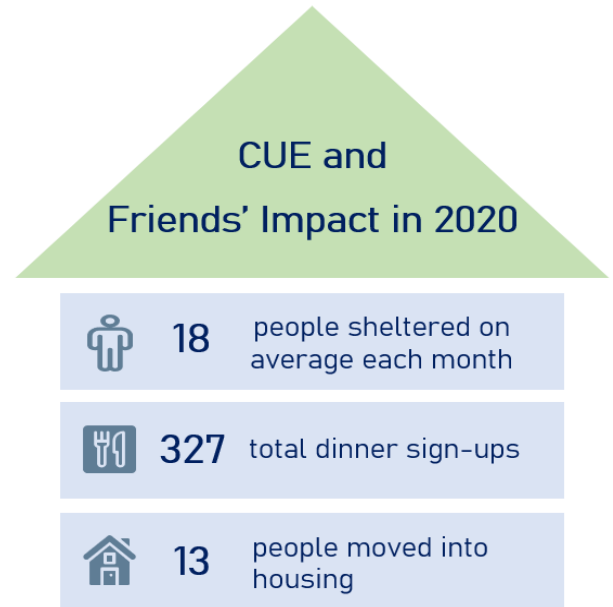


PEOPLE HELPED IN 2020

Your support helps give people experiencing homelessness a safe and secure alternative to sleeping in the woods or on a bench. Those who were hungry or cold are able to enjoy warm meals and clothes thanks to you. Though the statistics in the graphic on this page cannot tell the full story of your impact, they give an idea of how meaningful your support is for Camp Unity.

In addition to shelter and hot meals, Camp Unity includes hot showers, a washer and dryer, 24/7 security provided by residents, and transportation to important needs. A stay at Camp Unity is an opportunity to rebuild a more sustainable life in a stable environment. In 2020, 13 people moved from Camp Unity to either an apartment, shared housing, or with family.

Camp Unity Eastside is a fully volunteer, non-profit organization. 100% of donations are used to support Camp Unity operations.



2020 REFLECTIONS AND UPDATES

2020 was a year different from any that we have experienced. The steadfast support from so many throughout the year made it possible for Camp Unity to weather this storm.

Since early March 2020, we have taken several steps to avoid the spread of COVID-19 for the health of Camp Unity residents and volunteers and we have updated our procedures during the course of the year. Out of an abundance of caution for the health and safety of current residents, as well as volunteers and hosts, the Camp Unity Board temporarily suspended new admissions for a portion of the year. We later resumed admissions of new residents and are not aware of any cases of COVID-19 at the camp.

We also made progress on the following priorities for 2020.

Priority 1: Seek and receive enough grants and donations to cover the expenses for the camp's daily operations in 2020 and continue to update camp facilities. Among the needs for 2020 were significant repairs for the camp van and shower trailer.

Thanks to generous donations from faith communities, organizations, businesses, and individuals, Camp Unity was able to address these needs in 2020.

Sanitation (portable toilets) and waste management (trash disposal and recycling) account for about 45% of Camp Unity's budget and were fully funded in 2020. These services are essential for the safety of camp residents, visitors, and hosts, and are required by permits issued by local jurisdictions for the camp's stay. A special thank you to the City of Woodinville for a COVID-19 Emergency Human Services Grant, our faith community partners, and all other donors who provided unrestricted funding, which we used to fund these services in 2020.

Improvement to camp facilities and supplies in 2020 and early 2021 included:

- Completed several high priority repairs for our Sienna van, including replacement of the timing belt, brakes, motor mounts, and water pump with funding assistance from the Kirkland Interfaith Network. The van is used to provide transportation for residents for medical needs, appointments, work, and camp needs, such as mail pick up.
- Replaced the floor and walls of our shower structure, recalked and repainted the inside, added a roof over the laundry, recalked and repainted the outside plywood, and winterized the hoses, with funding from Wooden Cross Lutheran Church and the Kirkland Interfaith Network.
- Acquired 14 new, all-season individual tents with funding assistance from the Society of St. Vincent de Paul Saint Teresa of Calcutta Conference. These acquisitions have enabled Camp Unity to continue to replace worn-out tents and maintain capacity for additional people who seek shelter at the camp.
- Replaced one of the camp's refrigerators and added two full-sized microwaves to replace ones that were no longer working.
- Maintained a sufficient supply of personal protection supplies including hand sanitizer, masks, and gloves, thanks to generous support from Bread of Life Christian Church in Seattle, the City of Woodinville, King County COVID-19 Homelessness Response, and others we may not be aware of.



Priority 2: Add members to the Camp Unity Eastside Board of Directors

Filling vacancies and adding capacity to the Camp Unity Board was a major priority in 2020 and continues in early 2021. We are thrilled that the Board includes three additional members: Dennis Kronewitter, John Eagle, and Michael Rader. Dennis and John both joined the board in September 2020 and Michael joined in February 2021.

Dennis brings experience from his professional work at The Boeing Company and earlier work as an advocate for adults with disabilities. Dennis also volunteered as a Crisis Line operator, and as an advocate at the Community Resource Center in Bellingham. John brings professional experience from his work at HD Fowler Company as well as volunteer experiences. His skills and experience in business, construction, communication outreach, fund development, and social services are a great addition. Dennis and John are members of Woodinville Church of Christ.

Michael Rader's volunteer experience includes his work on the Diocese of Olympia Grant Committee and service as Outreach Chair and Senior Warden at St. Hilda St. Patrick Episcopal Church. He was involved with Tent City 4 since its inception and organized a church group that provided meals and supplies. He and his wife shifted to supporting Camp Unity after the camps split in 2012. He has also worked for 20+ years with Northwest Harvest organizing volunteer groups.

Mark Van Wormer, who served on the Camp Unity Board for four years as Secretary, stepped down in August 2020 to learn about and work on racism issues, though he continues to help in particular with securing temporary use permits. Alana McWade joined the Board in August as Secretary though stepped off in January 2021 for family reasons. The Board is currently seeking to fill the Secretary position.

Priority 3: Continue to seek updates to temporary use codes for cities that still have a maximum of 90 day stays or that have high fees for temporary use permits

Due to the focus in 2020 on the pandemic and adding board capacity, we did not make much progress on this priority. While most local governments allow stays of four months or more for encampments, a few cities limit stays to 90 days. A stay of 120 days or more enables Camp Unity to move three times a year rather than four, which is a very significant savings in time, cost, and stress.

We are also seeking a change to the temporary use permit fee of \$7,033 in Redmond. Camp Unity provided feedback on Redmond's draft housing action plan, including the request to lower the city's high permit fee for temporary encampments. More work is underway to pursue this since the high fee impacts the potential for faith communities or other organizations to host Camp Unity in Redmond.

Priority 4: Continue to expand the network of prospective host churches and seek preliminary host commitments through 2020-21

Generous churches hosted Camp Unity throughout 2020. For 2021, we have host commitments through the end of June and during the last quarter. We are actively pursuing a commitment for mid-Summer through Fall 2021 and also commitments for 2022. Finding hosts is critical to maintaining Camp Unity's ability to provide resources and shelter for those experiencing homelessness.



HOSTS

Camp Unity's hosts in 2020 and early 2021 are among those impacted by the pandemic. Despite the challenges and uncertainty that they were experiencing, these churches were compassionate, generous, and thoughtful hosts.

Bear Creek United Methodist Church: Last year began peacefully as Camp Unity wrapped up a stay at Bear Creek United Methodist Church. We are grateful to this church for their warm welcome and support, generous cold weather policy, access to the church lobby for special meals, and other kindness. *(CUE stay from September 14, 2019 to January 11, 2020)*

St. Teresa of Calcutta Catholic Church: When St. Teresa Church agreed to host Camp Unity in early 2020, none of us foresaw what would unfold with the pandemic. In the midst of this storm, the parish showed Camp Unity incredible compassion. St. Teresa provided wisdom and kindness as we worked through how best to respond to stay at home and social distancing directives. St. Teresa Church generously hosted Camp Unity for longer than anticipated due to these issues. St. Teresa made the church accessible on cold weather days, covered the additional utility expenses associated with the longer stay, provided many meals and essential supplies for the residents, and other special touches. *(CUE stay from January 10 to June 22, 2020)*

Northshore United Church of Christ: Usually providing shelter outside during the summer and fall does not involve significant weather issues. This year was an exception because the smoke from fires in California, Oregon and Washington resulted in people here needing to stay inside. Northshore United Church of Christ welcomed Camp Unity residents to come inside the church during the day and evening to avoid the smoke. Northshore UCC also generously hosted Camp Unity for longer than anticipated due to a delay in securing a permit for the next host site. Church members organized a work party to remove potentially dangerous tree limbs prior to the camp's arrival and volunteered to take care of the final site clean-up so that camp residents could focus on other portions of the move. This church blessed Camp Unity with several special

touches including providing breakfast foods, dinners, cold weather needs, and various supplies. *(CUE stay from June 19 to December 21, 2020)*

Kirkland Congregational Church: Camp Unity ended a challenging year with a return to Kirkland Congregational Church. We are grateful to Kirkland Congregational Church for their generosity prior to and during the camp's stay and for jumping right in to provide warm dinners to welcome residents. The weather became very cold and snowy and the church welcomed residents to stay inside. *(CUE stay from December 17, 2020 to March 9, 2021)*

Thank you also to Northlake Lutheran Church for committing to host Camp Unity Eastside from March 4 to June 29, 2021.

Prior to each camp move, we apply for a permit from the local government to locate at the new host. We appreciated the assistance and support in 2020 and early 2021 from staff with King County and the cities of Woodinville, Kirkland, and Kenmore.



Blankets and Pillows from MAPS-MCRC and Kits for Peace

CHURCH DONORS

We would like to recognize and thank the following congregations for their financial gifts during 2020 and early 2021:

- Bear Creek United Methodist Church
- Bread of Life Christian Church in Seattle
- Churchome
- Holy Family Parish
- Holy Spirit Lutheran Church
- Imprint Church
- Northlake Unitarian Universalist Church
- Northshore Community Church
- Overlake Christian Church
- St. Teresa of Calcutta Catholic Church
- Wooden Cross Lutheran Church
- Woven Church

The generous gifts from these congregations were vital to maintaining essential services at Camp Unity, improving camp equipment such as the van and shower structure, and supplying personal protection supplies and cold weather gear among other needs. Thank you, church partners!

VOLUNTEERS AND DONORS

Volunteers, donors, and other supporters are integral to the ability of Camp Unity Eastside to continue to be a place that provides a safe and friendly shelter for people experiencing homelessness. During 2020, generous volunteers and donors:

- Provided 327 dinners for camp residents, which was nearly 90 percent of the year and a new high. What was especially moving for us was the strong response starting in mid-March, the early stage of the pandemic. Many supporters either signed up to bring a dinner or provided a donation for the cost of dinners. The camp's dinner sign-ups were completely committed for a number of months and the camp had sufficient food to cover the few gaps. Many of these volunteers include people from numerous faith communities, clubs, scout

troops, youth groups, families, neighbors, and businesses, as well as other friends and supporters of Camp Unity. Camp Unity had enough food and supplies at some points during the year that residents were able to share with other organizations in need.

- Provided a variety of personal protection supplies, batteries, paper products, food and beverages, hand and toe warmers, head lamps, laundry detergent, clothing, blankets, coats, socks, and many other items. While we do not have a list of all donors who provided supplies (many of whom are anonymous) to thank personally, we are very thankful for their generosity.
- Helped with Camp Unity moves in various ways. Nearly 30 people helped move the camp in January from Bear Creek United Methodist Church to St. Teresa of Calcutta Catholic Church. During the rest of the year, volunteer involvement with the actual move was much more limited for the health and safety of residents and volunteers. The camp moved itself in June and had some volunteer help in December. Through it all, supporters continued to help with meals and snacks during the moves and also provided move supplies. We are grateful to Holy Family Parish for providing a gift to help with move expenses.
- Treated Camp Unity residents during the Christmas holiday with wonderful meals, gift bags, gift cards, home baked cookies, and other special touches. A big thank you to St. Teresa of Calcutta Catholic Church, Bear Creek United Methodist Church, and any other communities that we may not be aware of for generously blessing Camp Unity residents via their giving tree holiday programs.



Woodinville Church of Christ Supply Drive



Rocky's Empanadas Lunch for Move



MOD Pizza Totem Lake Lunch for Move

We would like to recognize and express our gratitude for the generous financial gifts in 2020 and early 2021 from individual donors:

Chris Aakre
 Linda Alexander
 Patricia Blacketer
 BrN Engineering, Inc
 Claudia and David
 James and Kelly Fish
 Paul and Kathie Forman
 Shelley
 Peter and Eddy
 Jason and Neoma Gould
 Sarah Gustafson and David Levitan
 Jennifer Hagander-Luanava
 Anne Heartsong
 Richard Hemmen
 Petra Hilleberg
 Wes Holden
 Hugh and Alissa Hsu Lynch
 Carol Huber
 Wren Hudgins
 Lisa Jackson
 Damian Kirkendall, 6 years old
 Cindy Klettke
 David Klick LMT
 Terry Koepke
 Kelly Kraus
 Sara and John Lambert
 Andrea Liggett
 Michal London and Bill Trimm
 Tamar London
 Brook and Cyndy McBride
 John Meyer
 Kris and Christine Neese
 Jeremy Newton
 David and Vickie Orendorff
 Sarah Partap
 Ethan Patashnik
 David Rea
 The Regans
 Sam
 Mary Grace Roske
 Anibal and Marijana Ruiz
 Fred and Margaret Schwender
 Lynn and Kathy Sharp
 Dean and Jennifer Simmons
 Srivastava Family
 Suzanne Taylor
 Karen and Steve Tidball
 Audrey Tsai
 Mark Van Wormer and Lori Peckol
 Ivan Varsovia
 Christine Webb
 Team Wilson

Any many who preferred to be anonymous.

Other Donations and Support in 2020 and Early 2021: Thank You!

- **Carnation Storage and Tolt Laundry** for covering the cost to wash and dry blankets for Camp Unity
- **Churchhome members** for landscape clean-up at Northshore United Church of Christ
- **City of Kenmore and King County** for waiving the temporary use permit fee for Camp Unity
- **City of Woodinville** for a COVID-19 Emergency Human Services Grant for 2020, reduced permit fee, and approval of a Human Services Grant for 2021-22 for use when Camp Unity is located in Woodinville
- **Costco Kirkland** for a gift card for essential supplies
- **East West Bank** for funding camp needs
- **John and Dara Eagle via HD Fowler Company and also Ferguson Enterprises** for donating the PVC pipe needed to construct the required perimeter screen in Kirkland for Camp Unity
- **Greater Seattle Cares** for hosting the meals calendar for Camp Unity for many years and Bill Bear for managing it
- **Hampton Inn and Suites Woodinville** for donating a large supply of breakfast foods
- **King County Library System** for new mobile hotspots and visits by the mobile van
- **King County COVID-19 Homelessness Response** for providing personal protection supplies, including hand sanitizer, masks, and gloves. King County Public Health for providing on-site flu and other vaccines for camp residents.
- **Kirkland Interfaith Network** for funding repairs to the camp van and shower structure, and for organizing a fundraising campaign in support of essential needs at Camp Unity
- **L&W Supply, Redmond** for allowing Camp Unity to purchase building materials for tent platforms at a discounted price

- **Lake Washington United Methodist Church** for assisting with CUE residents' mail
- **MAPS Muslim Community Resource Center** in collaboration with Kits for Peace for donating new pillows and blankets
- **MOD Pizza Totem Lake, Pono Plates Food Truck, and Rocky's Empanadas, Redmond** for donating meals during camp moves
- **Microsoft, Boeing, Rakuten, and other employers** for funding via their matching gift programs
- **Kris Neese** for creative services for CUE's website and fundraising
- **Northshore Interact Club** for organizing a drive and donating items such as towels, blankets, and pillows, and a financial gift
- **People on Purpose** for funding camp needs
- **Pot O' Gold Coffee** for coffee for the camp
- **Purified Water to Go** for water and snack food
- **Ryatt Construction** for donating services for sewer permit requirements for Camp Unity's stay at Northlake Lutheran Church
- **Starbucks, Chick-fil-A, Kentucky Fried Chicken, and other businesses** for food and beverages
- **Stile Windows and Doors** for donations to help cover camp move costs
- **Society of St. Vincent de Paul, Saint Teresa of Calcutta Conference,** for funding for tents
- **Thrivent Financial** for funding camp needs
- **U-Haul** for substantial truck rental discounts for camp moves
- **Woodinville Church of Christ, Bear Creek United Methodist Church, Churchome, and any other faith communities and groups we may not be aware of** for providing cold weather needs and organizing supply drives for Camp Unity

And all others who have generously donated their time, talents, and resources to support Camp Unity. Our success is directly tied to the generosity of our donors and volunteers - thank you!

PRIORITIES FOR 2021-22

Looking ahead, Camp Unity Eastside Board priorities for 2021 and early 2022 include the following:

- Secure a host for mid-Summer through Fall 2021 and continue to expand the network of faith community hosts through 2022-23
- Work with the City of Redmond to achieve a reasonable permit fee for homeless encampments and pursue changes to temporary use codes in cities that still have a maximum 90-day stay for encampments
- Fill the board secretary position on the Camp Unity Eastside board of directors
- Seek and receive enough grants and donations to cover the expenses for the camp's daily operations and facility updates in 2021. Among the anticipated facility needs for 2021 are replacing more of the camp's appliances and other equipment. Camp Unity's annual budget is \$50,850, which equates to \$212 per camp resident per month, based on an average of 20 residents per month (average for past two years).
- Evaluate the potential to add part-time social services help to assist Camp Unity residents, working in partnership with one or more service providers

Longer term, Camp Unity Eastside's vision is to work in partnership with one or more organizations to acquire property that could be used for enhanced transitional shelter to support residents' path from homelessness to permanent housing.